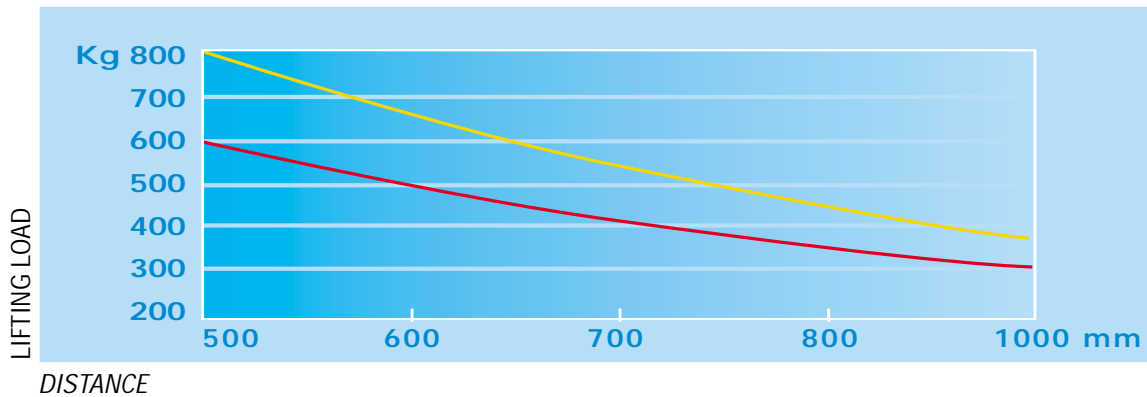


# TIME



ME 6 —

ME 8C —

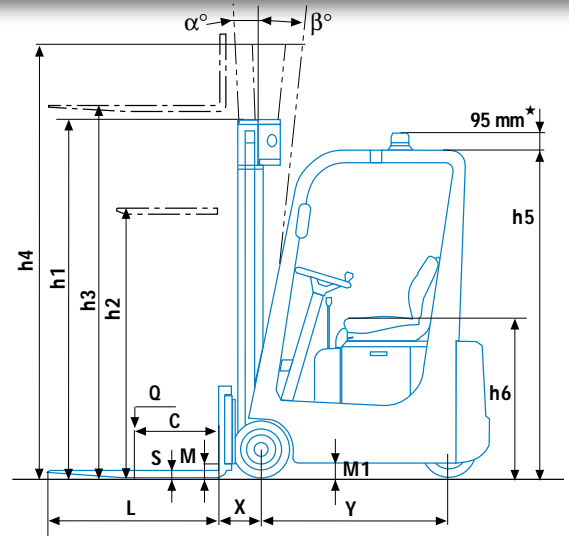
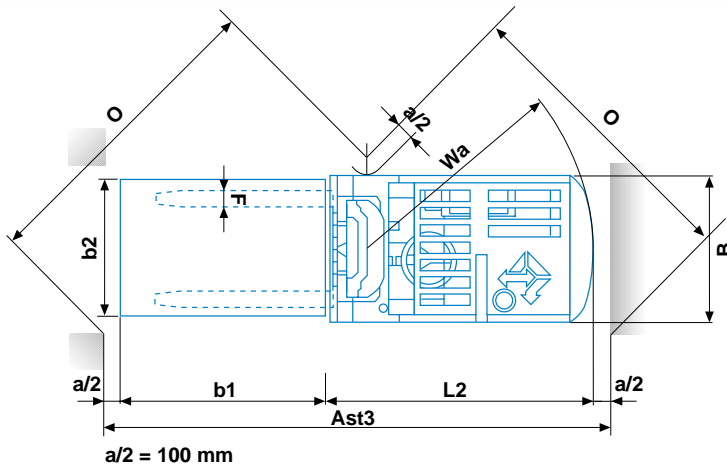


### MAST DETAILS

HEIGHT		STANDARD				DUPLEX GAL				TRIPLEX GAL		
		INCL. SIDE-SHIFT				INCL. SIDE-SHIFT				INCL. SIDE-SHIFT		
Lifting	h3	2870	3200	3800	4200	2870	3200	3800	4200	4305	4800	5700
Height mast collapsed	h1	1900	2065	2365	2565	1900	2065	2365	2565	1900	2065	2365
Height mast extended	h4	3315	3645	4245	4645	3315	3645	4245	4645	4750	5245	6145
Free lift	h2	-	-	-	-	1435	1600	1900	2100	1435	1600	1900
Width	B	785	785	845	845	785	785	845	845	845	845	885

6 - 8C - 9

# SERIE ME 6-8C



June 2008

## SPECIFICATION SHEET

			ME 6	ME 8C
CHARACTERISTICS	1	Manufacturer	Abbreviated form	
	2	Models	Manufacturer's model	
	3	Capacity		Kg
	4	At load centre		mm
	5	Type of drive	Electric (Battery) - Diesel - Fuel gas	
	6	Type of steering	Driver standing - driver sitting - outside	
	7	Tyres	V Cushion - SE Superel. front / rear	
	8	Wheels	Quantity (♦ = driven) front / rear	
DIMENSIONS	9	Lift	h3	mm
	10		h2	mm
	11	Forks Fem I	Length(L) x Width(F) x Thickness(S)	
	12	Tilt	Of the mast- forward ( $\alpha$ ) / backward ( $\beta$ )	
	13		L2	mm
	14		B	mm
	15	Overall dimensions	h1	mm
	16		h4	mm
	17		h5	mm
	18		h6	mm
	19	Turning radius	Wa	mm
20	Distance of load	X	mm	
21	Width of aisle	O	mm	
22		Ast 3	mm	
PERFORMANCES	23	Stability tests	Complying with EEC Directive 98/37/EC	
	24	Speeds	Driving	Km/h
	25		Lifting	m/sec
	26		Lowering	m/sec
	27	Draw-bar-pull	At the hook max	N
	28	Gradeability		%
	29		Max.	%
WEIGHT	30	Weight	Truck, battery included	
	31	Axle load	Without load	front / rear
	32		With load	front / rear
	CHASSIS	33	Wheels	Number
34		Dimensions front		mm
35		Dimensions rear	mm	
36		Wheel base	Y min. / max. (variable)	
37		Wheel track	Wheels centerline front	
38		Ground clearance	M	mm
39			M1	mm
40		Brakes	Service (foot) brake	
41			Hand parking brake	
DRIVE		42	Battery	Type
	43		Volt/Ah (capacity at 5 hours' discharge)	
	44		Weight	
	45	Power steering	Hydraulic - electronically controlled	
	46	Electric motors	Hourly output of driving motor	
	47		Lifting motor, output	
	48	Traction Contr.	Electronic by microprocessors	
49	Pump control	Electronic by microprocessors		
50	Working Press.	For additional attachments		

★ On demand installation of the flashlight inside the height of the overhead guard h5

# with mast in vertical position

\* included side-shift

$$Ast\ 3 = Wa + \sqrt{(x + b^1)^2 + (b^2/2)^2} + a$$

Data showed are not binding and are liable to variations. The constructor reserves the right of changes without notice.