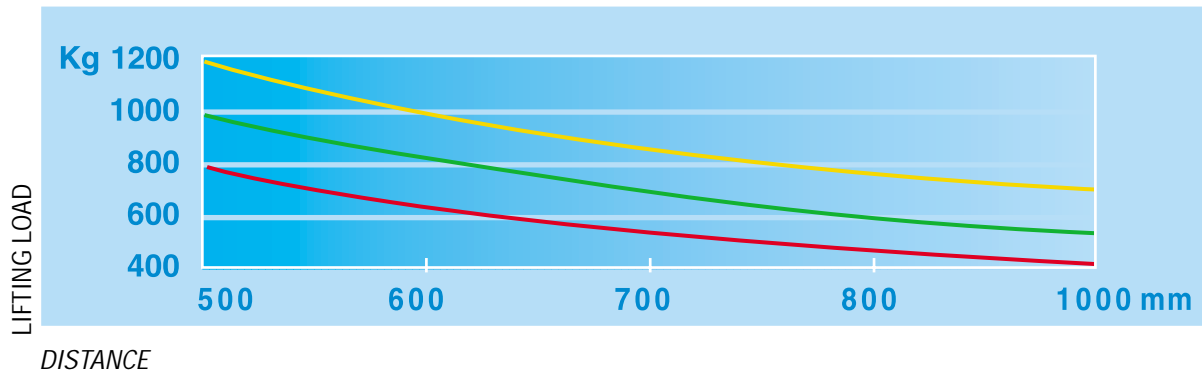


TIME



ME 8 — ME 10 — ME 12 —

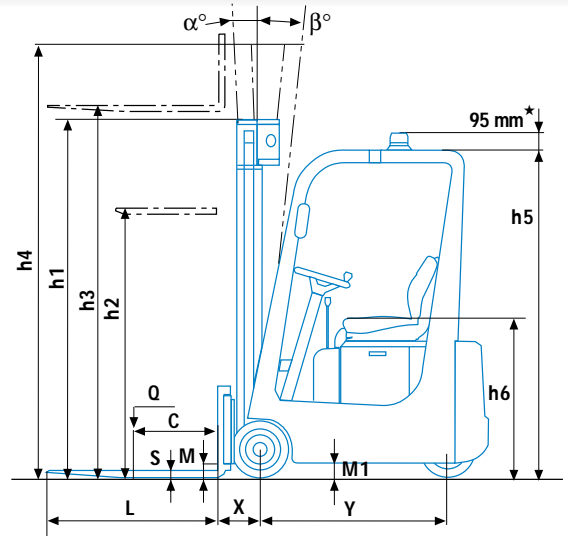
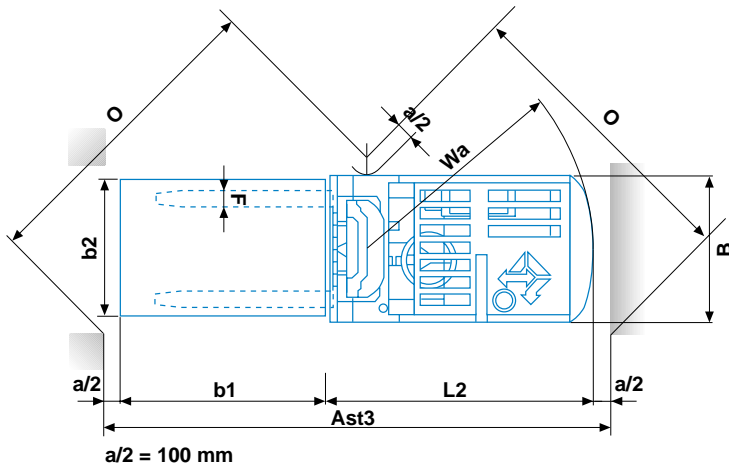


MAST DETAILS

HEIGHT		STANDARD INCL. SIDE-SHIFT				DUPLEX GAL INCL. SIDE-SHIFT				TRIPLEX GAL INCL. SIDE-SHIFT		
		2870	3200	3800	4200	2870	3200	3800	4200	4305	4800	5700
Lifting	h3	2870	3200	3800	4200	2870	3200	3800	4200	4305	4800	5700
Height mast collapsed	h1	1920	2090	2390	2590	1920	2090	2390	2590	1920	2090	2390
Height mast extended	h4	3395	3725	4325	4725	3395	3725	4325	4725	4830	5325	6225
Free lift	h2	-	-	-	-	1475	1635	1935	2135	1475	1635	1935
Width ME 8 -ME 10	B	850	850	850	910	850	850	850	910	910	910	950
Width ME 12	B	890	890	890	950	890	890	890	950	950	950	1000

8-10-12

SERIE ME 8-10-12



January 2004

SPECIFICATION SHEET

		ME 8	ME 10	ME 12
CHARACTERISTICS	1 Manufacturer	Abbreviated form		
	2 Models	Manufacturer's model		
	3 Capacity			Kg
	4 At load centre	C Distance		mm
	5 Type of drive	Electric (Battery) - Diesel - Fuel gas		
	6 Type of steering	Driver standing - driver sitting - outside		
	7 Tyres	V Cushion - SE Superel. front / rear		
	8 Wheels	Quantity (♦ = driven) front / rear		
DIMENSIONS	9 Lift	h3 Lift		mm
	10	h2 Normal free lift (see Mast details)		
	11 Forks Fem II	Length(L) x Width(F) x Thickness(S)		
	12 Tilt	Of the mast- forward (α) / backward (β)		
	13	L2 Length at the fork backrest		mm
	14	B Width		mm
	15 Overall dimensions	h1 Height, mast collapsed		mm
	16	h4 Height, mast extended		mm
	17	h5 Height overhead guard		mm
	18	h6 Height seat from floor		mm
19 Turning radius	Wa		mm	
20 Distance of load	X From centre front axle		mm	
21 Width of aisle	O ($b' \times b^2$) 1200x800 - 1200x1000		mm	
22	Ast 3 ($b' \times b^2$) 1200x800 - 1200x1000		mm	
PERFORMANCES	23 Stability tests	Complying with EEC Directive 98/37/EC		
	Speeds	Driving with /without load	Km/h	
		Lifting with /without load	m/sec	
		Lowering with /without load	m/sec	
	27 Draw- bar- pull	At the hook max with /without load	N	
	Gradeability	with /without load	%	
Max. with /without load		%		
WEIGHT	30 Weight	Truck, battery included		
	31 Axle load	Without load front / rear	Kg	
		With load front / rear	Kg	
CHASSIS	33 Wheels	Number front / rear	n	
	34 Dimensions front	Dimensions front	mm	
		Dimensions rear	mm	
	36 Wheel base	Y min. / max. (variable)	mm	
	37 Wheel track	Wheels centerline front	mm	
	38 Ground clearance	M With load at the lowest point	mm	
		M1 With load of wheel base	mm	
	40 Brakes	Service (foot) brake		
		Hand parking brake		
	DRIVE	42 Battery	Type	
43 Volt/Ah (capacity at 5 hours' discharge)			V/Ah	
		Weight	Kg	
45 Power steering		Hydraulic - electronically controlled	yes/no	
46 Electric motors		Hourly output of driving motor	Kw	
		Lifting motor, output	Kw	
48 Traction Contr.		Electronic by microprocessors	yes/no	
49 Pump control		Electronic by microprocessors	yes/no	
50 Working Press.		For additional attachments	Bar	

★ On demand installation of the flashlight inside the height of the overhead guard h5

with mast in vertical position

* included side-shift

$$Ast\ 3 = Wa + \sqrt{(x + b')^2 + (b^2/2)^2} + a$$

Data showed are not binding and are liable to variations. The constructor reserves the right of changes without notice.