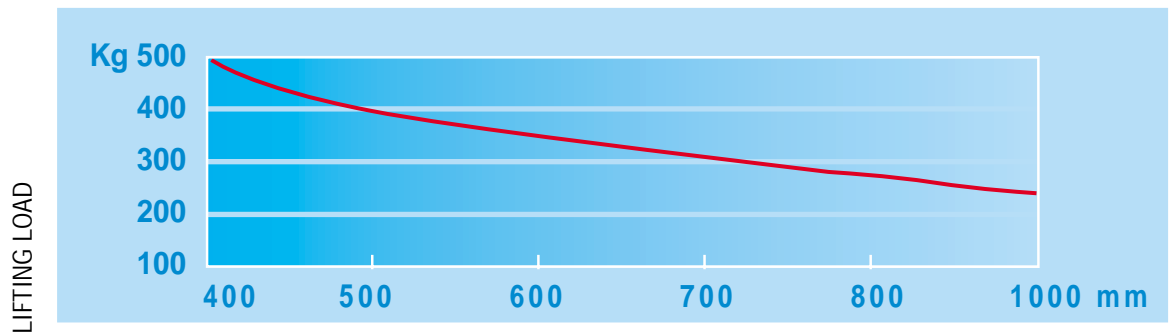


MYCROS



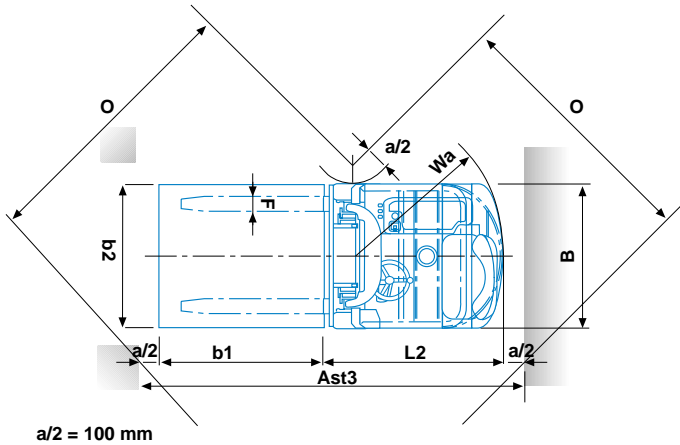
DISTANCE

MAST DETAILS

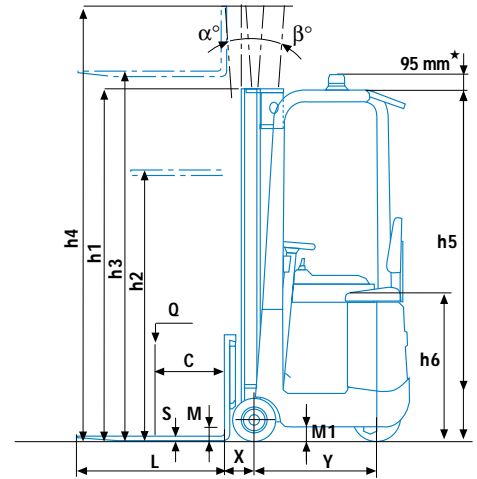
HEIGHT		STANDARD INCL. SIDE-SHIFT			DUPLEX GAL INCL. SIDE-SHIFT			TRIPLEX GAL INCL. SIDE-SHIFT
Lifting	h3	2870	3200	3800	2870	3200	3800	4305
Height mast collapsed	h1	1900	2065	2365	1900	2065	2365	1900
Height mast extended	h4	3430	3760	4360	3430	3760	4360	4865
Free lift	h2	-	-	-	1435	1600	1900	1435
Width	B	785	785	845	785	785	845	845



MYCROS 4



a/2 = 100 mm



SPECIFICATION SHEET

MYCROS 4

★ On demand installation of the flashlight inside the height of the overhead guard h5

	CHARACTERISTICS			MYCROS 4		
	1	Manufacturer	Abbreviated form	V.MARIOTTI S.r.l.		
	2	Models	Manufacturer's model	MYCROS 4		
	3	Capacity	Q Lifting load	Kg	500 400	
	4	At load centre	C Distance	mm	400 500	
	5	Type of drive	Electric (Battery) - Diesel - Fuel gas	electric		
	6	Type of steering	Driver standing - driver sitting - outside	driver sitting		
	7	Tyres	V=Cushion - SE=Superel.	front / rear		
	8	Wheels	Quantity (♦ =driven)	front / rear		
	9	Lift	h3 Lift	mm	2870	
	10		h2 Normal free lift (see Mast details)	on demand		
	11	Forks Fem I	Length(L) x Width(F) x Thickness(S)	mm	800x80x25	
	12	Tilt	Of the mast- forward (α) / backward (β)	<°	2° / 3°	
	13		L2 Length at the fork backrest	mm	990 *	
	14		B width	mm	785	
	15	Overall dimensions	h1 Height, mast collapsed	mm	1900	
	16		h4 Height, mast extended	mm	3430	
	17		h5 Height overhead guard	mm	1900	
	18		h6 height seat from floor	mm	820	
	19	Turning radius	Wa	mm	845 #	
	20	Distance of load	X From centre front axle	mm	145 *	
	21	Width of aisle	O (b'x b²) 1200x800 - 1200x1000	mm	1760 - 1810	
	22		Ast 3 (b'x b²) 1200x800 - 1200x1000	mm	2450 - 2485	
	23	Stability tests	Complying with EEC Directive 98/37/CE	yes/no	yes	
	24	Speeds	Driving with /without load	Km/h	5,8 / 6,1	
	25		Lifting with /without load	m/sec	0,250 / 0,298	
	26		Lowering with /without load	m/sec	adjustable	
	27	Draw- bar- pull	At the hook max	N	800 / 950	
	28	Gradeability	with /without load	%	10 / 15	
	29		Max. with /without load	%	15 / 18	
	30	Weight	Truck, battery included	Kg	1150 •	
	31	Axle load	Without load	front / rear	Kg	465 / 685
	32		With load	front / rear	Kg	1370 / 280
	33		Number	front / rear	n	2 / 1
	34	Wheels	Dimensions front	mm	230x85x170	
	35		Dimensions rear	mm	267x89x165	
	36	Wheel base	Y min. / max. (variable)	mm	635 / 690	
	37	Wheel track	Wheels centerline front	mm	700	
	38	Ground clearance	M With load at the lowest point	mm	70	
	39		M1 With load of wheel base	mm	80	
	40	Brakes	Service (foot) brake	mechanical		
	41		Hand parking brake	mechanical		
	42	Battery	Type	Traction		
	43		Volt/Ah (capacity at 5 hours' discharge)	V/Ah	24 / 184 - 24 / 250	
	44	Weight	Kg	180 • - 220		
	45	Power steering	Hydraulic - electronically controlled	yes/no	no	
	46	Electric motors	Hourly output of driving motor	Kw	1	
	47		Lifting motor, output	Kw	3	
	48	Traction Contr.	Electronic by microprocessors	yes/no	yes	
	49	Pump control	Electronic by microprocessors	yes/no	no	
	50	Working Press.	For additional attachments	Bar	75	

Data showed are not binding and are liable to variations. The constructor reserves the right of changes without notice.

with mast in vertical position • included side-shift Ast 3 = $Wa + \sqrt{(x + b')^2 + (b^2/2)^2} + a$